

Myanmar Country Presentation

Managing Protected Areas effectively

By

Tin Zar Kywe, PhD

Assistant Director

Nature and Wildlife Conservation Division

Forest Department

20-6-2018

General information about Myanmar



Physical Profile

Myanmar situated in Southeast Asia

Area - 676,577 km²

Demography

Total population – 51.4 million (2014)

Population growth rate - 1.03%

Climate

Temperature

25· - 33·C (Rainy Season- June~October)

10· - 25·C (Cold Season-

November~February)

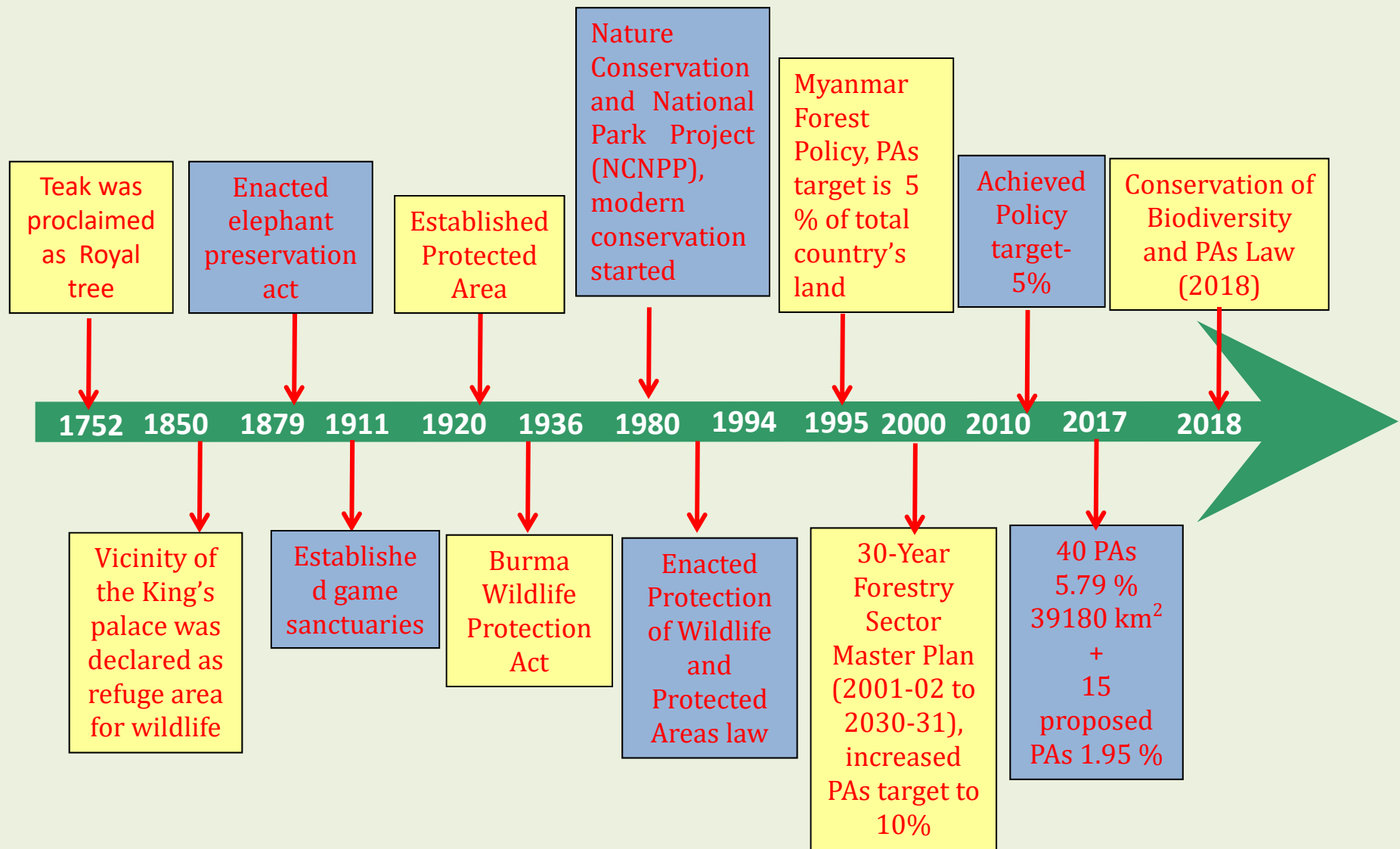
32· - 43· C (Hot Season- March ~ May)

Rainfall

Minimum < 800 mm

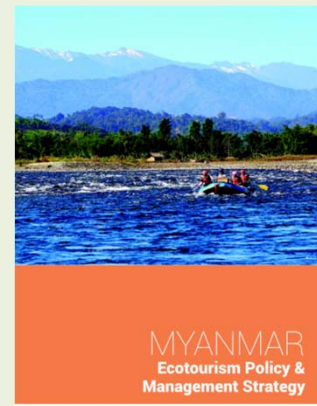
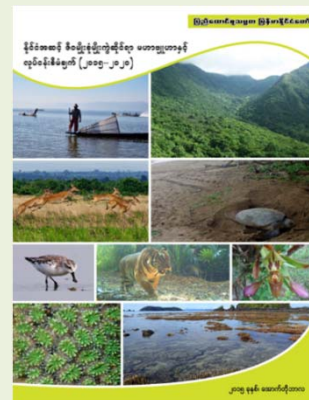
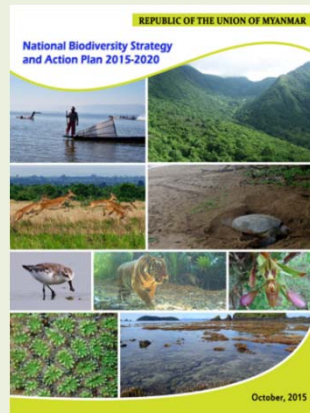
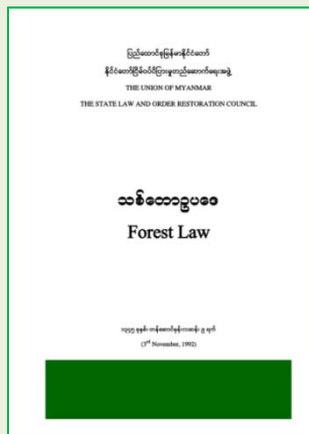
Maximum > 5000 mm

Biodiversity Protection and PAs Management



Policy, Law and National Strategies

- Forest Policy, 1995
- Forest Law, 1992
- Forest Rules, 1995
- Protection of Wildlife and Protected Areas Law, 1994
- Community Forestry Instruction (1995)
- Protection of Wildlife and Protected Areas Rules, 2002
- National Forestry Sector Master Plan, 2001-02 to 2030-31
- National Biodiversity Strategy and Action Plan, 2015-2020
- Myanmar Ecotourism Policy and Management Strategy, 2015-2025
- Conservation of Biodiversity and Protected Areas Law (2018)



Protected Areas in Myanmar

- The term “protected area” officially appeared in “the Conservation of Biodiversity and Protected Areas Law (2018)”
 - “Protected Area means the area determined under this law for the purpose of Protection and Conservation of wildlife, ecosystem or significant landscape for their sustainment”
- There are seven PA categories;
 - Scientific Reserve;
 - National Park;
 - Marine National Park;
 - Nature Reserve;
 - Wildlife Sanctuary;
 - Geo-physically Significant Reserve;
 - Indigenous Community Conserved Areas

Key Activities in Management

- Patrolling and law enforcement
- Key species inventory, monitoring and evaluation
- Extension
- Community outreach programs
- Capacity building of PA staff
- Promoting ecotourism within PAs
- Collaborative research with NGOs, INGOs
- Habitat restoration planning



09/19/2015 10:35

Protected Area Management Effectiveness (PAME) Methodologies and Tools

Protected Areas (PAs) are one of the most effective tools for biodiversity conservation. But establishment of PAs cannot fully protect ecosystems and biodiversity.

In collaboration with Wildlife Conservation Society (WCS)

In collaboration with Norwegian Environment Agency (NEA)

- to strengthen and increase effectiveness conservation areas through **Spatial Monitoring and Reporting Tools (SMART)** Patrol, implement **METT (Monitoring Effectiveness Training Tools)** for protected area, develop key species population monitoring system, and a sustainable human-wildlife mitigation conflict system to reduce human and animal victim.

SMART: Spatial Monitoring and Reporting Tool:

- A useful and suitable technology for PAs, law enforcement, monitoring ecosystems.

Protected Area Management Effectiveness (PAME) Methodologies and Tools

History of METT

- **To fulfill the requirements of international commitments**
- Myanmar Forest Department has jointly conducted with international organizations in biodiversity conservation and Protected Areas' management.
- It is necessary to know the current situation and needs of PAs when we submit the plan to higher levels as well as in doing discussion with international organizations
- In order to implement the NBSAP targets
- 2013-2018 (GEF-5 Project, Forest Department+WCS+UNDP)
- 2016 (Forest Department)

Assessment sheet distributed to PAs

Management effectiveness tracking tool စီမံအုပ်ချုပ်ခြင်း ထိရောက်မှု ဆန်းစစ်ခြင်း နည်းလမ်းများ Reporting Progress at Protected Area Sites: Data Sheet 1 သဘာဝနယ်မြေတွင် တိုးတက်မှု အစီရင်ခံစာ၊ အချက်အလက်ဇယား ၁

Name, affiliation and contact details for person responsible for completing the METT (email etc.) METT ကို ပြည့်စုံစွာဖြည့်စွက်ရန် လိုအပ်သည့် အမည်၊ ဌာန နှင့် ဆက်သွယ်ရမည့် လိပ်စာ		
Date assessment carried out ရက်စွဲ		
Name of PA သဘာဝနယ်မြေအမည်		
Location of PA သဘာဝနယ်မြေ တည်နေရာ		
Date of Establishment တည်ထောင်သည့် ခုနှစ်		
Size of PA (ha) အကျယ်အဝန်း (ဟက်တာ)		
Number of staff: ဝန်ထမ်းအင်အား		
Annual budget (Kyar) – excluding staff salary costs နှစ်စဉ် ဘဏ်ဂျာနယ် (ကျပ်)- ဝန်ထမ်းလစာကို ဖယ်၍		
What are the main values for which the area is designated သဘာဝနယ်မြေတည်ထောင် ရခြင်း၏ အဓိကတန်ဖိုးများ		
Management objective 1: စီမံအုပ်ချုပ်မှုရည်ရွယ်ချက် (၁)		
Management objective 2: စီမံအုပ်ချုပ်မှုရည်ရွယ်ချက် (၂)		

Protected Areas Threats: Data Sheet 2: သဘာဝနယ်မြေအပေါ် အန္တရာယ်ကျရောက်မှုများ၊

အချက်အလက်ပုံစံ ၂:

- Please tick all relevant existing threats as either of high, medium or low significance. ကျရောက်နေသော အန္တရာယ်များ၏ အဆင့် (မြင့်မားခြင်း၊ အလယ်အလတ်၊ နည်းပါးခြင်း) ကို ရွေးချယ်ပေးရန်။
- Note that some of the activities listed are not always threats – only tick them if they threaten the site's integrity in some way. အချို့သောလုပ်ငန်းများကို အမြဲတမ်း အန္တရာယ်များဟု မှတ်ယူ၍ မရသည့်ကဲ့သို့ သတိပြုရန် လိုပါသည်။ မိမိတို့သဘာဝနယ်မြေ၏ တည်မြဲမှုအပေါ် ဖြိုခွဲခြောက်မှုသာ ကျရောက်နေသည့် အန္တရာယ်အဖြစ် ရွေးချယ်ရန် ဖြစ်ပါသည်။
- Threats ranked as of high significance are those which are seriously degrading values; medium are those threats having some negative impact and those characterized as low are threats which are present but not seriously impacting values or N/A where the threat is not present or not applicable in the PA. အန္တရာယ်များ၏ အဆင့်ကို သတ်မှတ်ရာတွင် မြင့်မားခြင်းသည် တန်ဖိုးများကို ဆိုးရွားစွာ ကျဆင်းမှု ဖြစ်စေခြင်း၊ အလယ်အလတ်သည် အချို့သော ဆိုးကျိုးများ ဖြစ်စေခြင်း၊ နည်းပါးခြင်းသည် အန္တရာယ်အနေဖြင့် ကြုံတွေ့နေရသော်လည်း တန်ဖိုးများအပေါ် ဖြင်းထန်စွာ ထိခိုက်မှု မရှိခြင်း၊ မရှိခြင်း (N/A) သည် အန္တရာယ်ကျရောက်မှု မရှိခြင်း သို့မဟုတ် မိမိတို့ သဘာဝနယ်မြေနှင့် သက်ဆိုင်မှု မရှိခြင်းတို့ ဖြစ်သည်။

1. Residential and commercial development within a Protected Area

၁။ သဘာဝနယ်မြေအတွင်း အခြေကျ ဇာတိနှင့် နှင့် စီးပွားဖြစ် လုပ်ငန်းများ

Threats from human settlements or other non-agricultural land uses with a substantial footprint လူမှုအခြေချနေထိုင်ခြင်း နှင့် သယ်ယူပို့ဆောင်ရေးအခြေအနေအထားကို အသုံးပြုသည့် စိုက်ပျိုးရေးမဟုတ်သည့် အခြားမြေအသုံးစနစ်များကြောင့် ဖြစ်ပေါ်လာသည့် အန္တရာယ်များ

High မြင့်မားခြင်း	Medium အလယ်အလတ်	Low နည်းပါးခြင်း	N/A မရှိခြင်း	Threat အန္တရာယ်	Notes မှတ်ချက်
				1.1 Housing and settlement ၁.၁ လူနေအိမ် နှင့် အခြေချမှု	
				1.2 Commercial and industrial areas ၁.၂ စီးပွားရေး နှင့် ဝတ်မှု နယ်မြေများ	
				1.3 Tourism and recreation infrastructure ၁.၃ ဝေးလှည့်လှည့်ခန်း နှင့် အခန်းမြေခြင်း ဆိုင်ရာ အခြေခံအဆောက်အအုံများ	

2. Agriculture and aquaculture

၂။ စိုက်ပျိုးရေး နှင့် ငါးမွေးမြူရေး

Threats from farming and grazing as a result of agricultural expansion and intensification, including silviculture, mariculture and aquacultureစိုက်ပျိုးခြင်း၊ မြေတိုးခြင်း နှင့် အလှူအထွက်တိုးရန် ဆောင်ရွက်ခြင်းတို့အရ စိုက်ပျိုးရေး၊ စားကျက်ခြင်းတို့မှ ဖြစ်ပေါ်လာသည့် အန္တရာယ်များ

High မြင့်မားခြင်း	Medium အလယ်အလတ်	Low နည်းပါးခြင်း	N/A မရှိခြင်း	Threat အန္တရာယ်	Notes မှတ်ချက်
				2.1 Annual and perennial non-timber crop cultivation ၂.၁ သစ်မရှိသော နှစ်စဉ် နှင့် တစ်နှစ်ခံ သီးနှံများစိုက်ပျိုးခြင်း	
				2.1a Drug cultivation ၂.၁ ဓားထိုးစိုက်ပျိုးခြင်း	

Assessment form သလုလင်ဆန်းစစ်ခြင်းပုံစံ

Issue ပြဿနာများ	Criteria စံသတ်မှတ်ချက်များ	Score: Tick only one box per question ရမှတ်: မေးခွန်းတစ်ခုစီအတွက် အထွက်တစ်ခုကိုသာ ရွေးချယ်အမှတ်ပြန်ရန်	Comment/Explanati on သုံးသပ်အကြံပြုချက်/ ရှင်းလင်းချက်	Next steps ဆက်လက်ဆောင်ရွက်မည့် အဆင့်
1. Legal status ၁။ ဥပဒေအရ အုပ်ချုပ်မှုအခြေအနေ	The PA is not gazetted/covenanted သဘာဝနယ်မြေအဖြစ် တရားဝင်သတ်မှတ်ခြင်း မရှိသေးပါ။	0		
Does the PA have legal status? သဘာဝနယ်မြေကို ဥပဒေအရ တည်ထောင်ခြင်း ဖြစ်သလား ?	There is agreement that the PA should be gazetted/covenanted but the process has not yet begun သဘာဝနယ်မြေအဖြစ် တရားဝင်သတ်မှတ်သင့်ကြောင်း သဘောတူညီချက်ရှိပြီး ဖြစ်သော်လည်း သတ်မှတ်မည့်လုပ်ငန်းစဉ်များ စတင်နိုင်ခြင်းမရှိသေးပါ။	1		
Contextual factors Contextual factors အကြောင်းအရာ	The PA is in the process of being gazetted/covenanted but the process is still incomplete (includes sites designated under international conventions, such as Ramsar, or local/traditional law such as community conserved areas, which do not yet have national legal status or covenant) သဘာဝနယ်မြေအဖြစ် တရားဝင်သတ်မှတ်ရန် ဆောင်ရွက်နေဆဲဖြစ်သော်လည်း ပြုပြင်ဆင်နွှဲမှုမရှိသေးခြင်း (ရန်ကင်းသို့သော နိုင်ငံတကာကွန်ဗင်းရှင်းများ အောက် တွင် သတ်မှတ်ထားသောနေရာများ၊ နိုင်ငံအဆင့် တရားဥပဒေများအောက်မှ မရှိသေးသော မိမိရေးရာ/ဓာတ်ပုံ ဥပဒေများဖြင့် ဝေသမများစီမံအုပ်ချုပ်နေသော နေရာများ ပါဝင်ပါသည်။)	2		
		၂		

In Myanmar, **METT** (Monitoring Effectiveness Training Tool) and **SMART** (Spatial Monitoring and Reporting Tool) are the most commonly used.

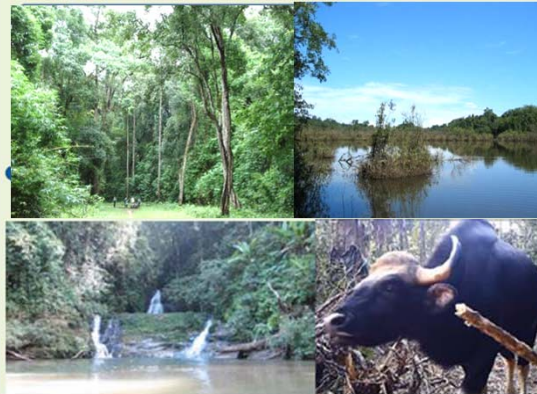
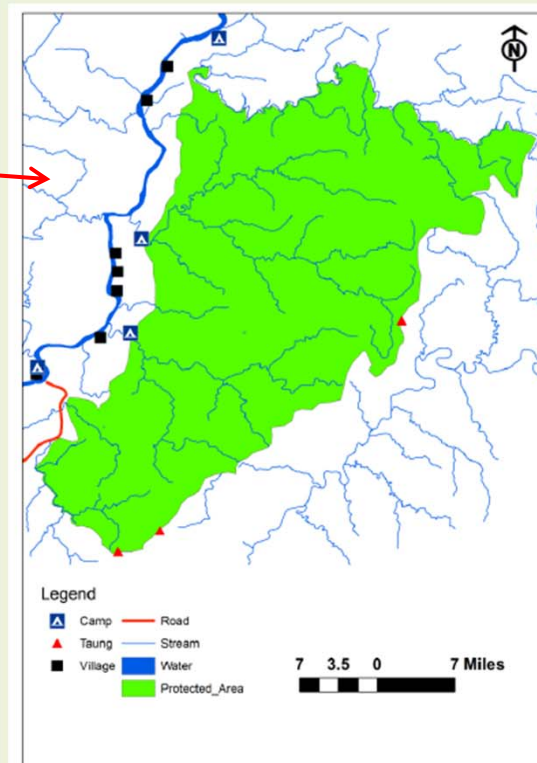
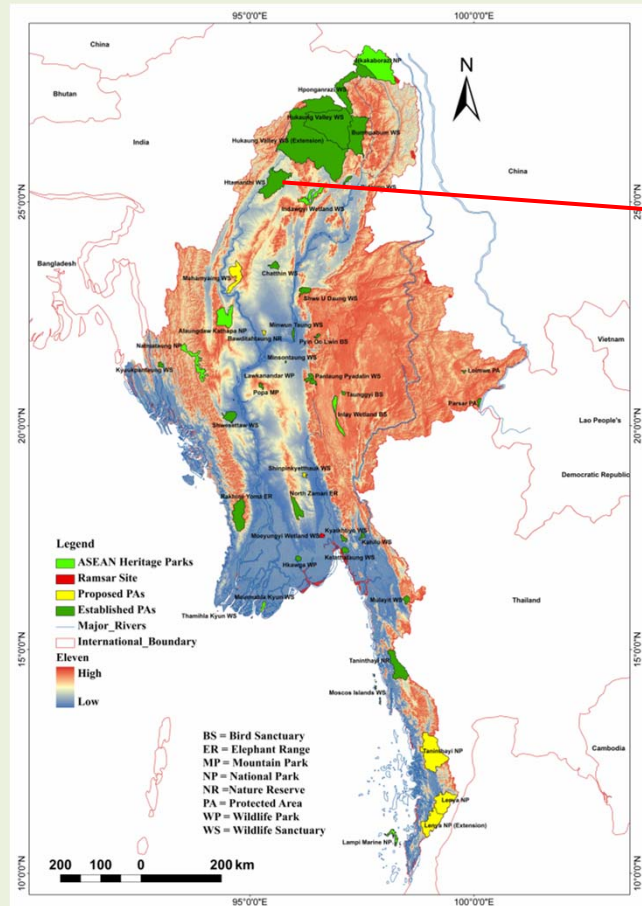
METT: Selected Sites

- ❑ 40 PAs in Myanmar, 21 PAs have Park Warden/Manager Offices
- ❑ **20 PAs , one PAs is established very recently.**

Benefits and Challenges

- Know the current situation of PAs
- The best solution and identify what are required to fill the gaps of PAs
- **12** PAs out of 20 send back the filled forms
- Capacity to understand and fill the forms

Case study: Htamanthi Wildlife Sanctuary



Forest Department
 Nature and Wildlife Conservation Division
 Htamanthi Wildlife Sanctuary



Background

Established as a Wildlife Sanctuary in May, 1974.

Conservation has been started on 1st September of 1994 when the park warden office was opened.



Location and Area

Homalin and Hkanti Townships, Hkanti District, Sagaing Region.

(830.4) sq. miles.

Objectives

- ❖ To protect watershed forests of Chindwin River.
- ❖ To conserve corridor of landscape species such as tiger and elephant.
- ❖ To protect endangered wildlife and their habitats.
- ❖ To conduct scientific research.

Values of Htamanthi WS

Contributions to Local People

- Non-timber forest products.
- Medicinal plants.
- Fishery resources.
- Jobs and income opportunities through ecotourism.

Services for Ecotourism

- Sancturay guard posts.
- Motor boat rentle.
- Local guides.
- Guest house (four persons can be accommodated).

Vegetation Types

Every green forest, moist upper mixed deciduous forest.

Fauna and Flora

(57) mammal spp., (322) bird spp., (67) fish spp., (77) amphibian & reptile spp. (432) plant spp., (19) medicinal plant spp., (14) bamboo spp., (8) rattan spp., (18) grass spp., (23) aquatic plant spp., (16) orchid spp.

Research Opportunities

- Distribution of rare wildlife species.
- Distribution of bird species.
- Richness of plant species and composition.
- Distribution and regeneration of Myanmar endemic Roofed Turtle.
- Traditional natural resources management and utilization of local people.

Recreational Opportunities

- Natural forests, water falls.
- Bird watching.
- Watching rare wildlife species.
- Rafting/boating in the streams.
- Jungle adventure.
- Culture and traditions of local Shan and Naga tribes



Threats of Htamanthi WS

No.	Threats	Level	Categories
1.	Livestock farming and grazing	Low	
2.	Mining and quarrying	Low	
3.	Shipping lanes and canals	Low	Transportation
4.	Flight paths	Low	
5.	Hunting, killing and collecting terrestrial (native) animals (including killing of animals as a result of human/wildlife conflict)	Low	Biological Resource use and harm
6.	Gathering NTFPs	Low	
7.	Logging, fishing, killing and harvesting aquatic resources	Low	
8.	Research, education and other activities	Medium	Human Intrusion
9.	Deliberate vandalism, destructive activities or threats to PA staff and visitors	Low	
10.	Other edge effect on park values, loss of key stone species	Low	Natural system modification
11.	Drought condition	Low	Hydrological change
12.	Invasive non-native/alien plants (weeds), Introduced genetic materials	Low	Invasive spp. & genes
13.	Industrial, mining and military effluents and discharges, Garbage and solid waste, Air-borne pollutants	Low	Pollution entering or generated
14.	Earthquakes, landslides, Erosion, siltation/ deposition	Low	Geological events
15.	Habitat shifting and alteration, droughts, temperate extremes, storms and flooding	Low	Climate change

Htamanthi Wildlife Sanctuary

METT in 2013 according to the GEF requirement-GEF- 5
project feasibility study by UNDP and WCS:
Total score 50, 49%

METT in 2018 according to the GEF requirement-GEF project
implementation by UNDP and WCS:
Total score 54, 53%

Brief MEE Process

- Distribution of METT Assessment Sheet from Forest Department Head Office to Protected Areas Park Warden Office
- The assessment sheet is developed by NWCD by using CBD and Ramsar guidelines to cover all types of PAs including:
 - Reporting [Progress at Protected Area Sites](#): Data Sheet 1
 - [Protected Areas Threats](#): Data Sheet 2
 - Assessment form
 - [Need](#) assessment form {field equipment, infrastructure, experts/staff (in line with the subject: mammals, birds, heptofauna, etc.), usefulness of trainings attended , wish-list of trainings}
- The timeline is 2 months and assessment sheet created as bi-language (Myanmar and English language)
- On the other hand, WCS-UNDP GEF-5 Project called “Strengthening Sustainability of Protected Area Management in Myanmar” conducted assessment by using METT tool: in four PAs called Hukaung WS, Htamanthi WS, Hkakaborazi NP and Hponkanrazi WS
- Conducted together with WCS and NWCD, FD staff
- Conducted in August 2016 to assess the management effectiveness and needs of PAs
- Assessment form filled by [Park Managers and staff, WCS staff and local people](#)
- [The main findings](#)

Future Plan for METT

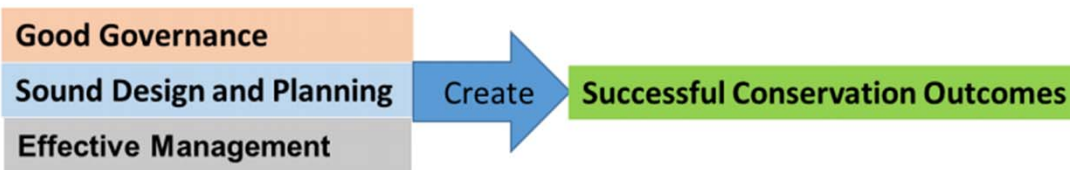
- Myanmar Forest Department in jointly conducting the project with Norwegian Environment Agency (NEA), “**Conservation of Biodiversity and Improved Management of Protected Areas in Myanmar (2015-2018)**”
- Under this project, we have a plan to conduct a training of METT in November 2018 for the modification of METT for Myanmar (IUCN expert will give the training).

THE IUCN GREEN LIST OF PROTECTED AND CONSERVED AREAS STANDARD

The IUCN Green List Standard is organised into four components of successful nature conservation in protected and conserved areas. The baseline components concern:

- **Good Governance**
- **Sound Design and Planning; and**
- **Effective Management**

Together, these support the component on **Successful Conservation Outcomes** attesting to the successful achievement of a site's goals and objectives. Each component has a set of criteria and each criterion has a set of generic indicators to measure achievement.



<https://www.iucn.org>

3) Section 3: IUCN Green List of Protected Area and Conserved Areas (2 minutes)

Is your country interested in adopting the IUCN Green List Standard?

- If "yes", please describe any plans that may already exist for adopting the Green List Standard and any particular needs/challenges that are foreseen.
- If "no", what are the reasons?

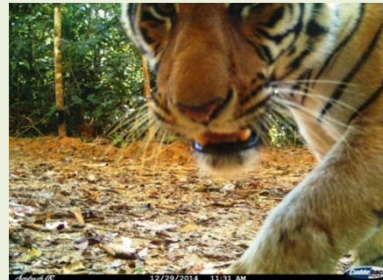
4) Section 4: Other International Standards (1 minute)

- Is your country using any other international PA management standards, such as Conservation Assured/Tiger Standards (CA/TS)? Please explain briefly which international PA management standards you are using.
- Is your country interested in adopting any other international PA management standards? If so, which ones?

Myanmar: Not yet
Need Awareness Raising
about IUCN Green List Std.
not only GOs, but also NGOs

Protected Areas

- PAs are now a vital legislative component of most international conventions related to biodiversity.
 - **Convention on Biological Diversity (CBD)**
 - **Convention on International Trade in Endangered Species (CITES)**
 - **Convention for the Protection of the World Cultural and Natural Heritage**
 - **Ramsar Convention**

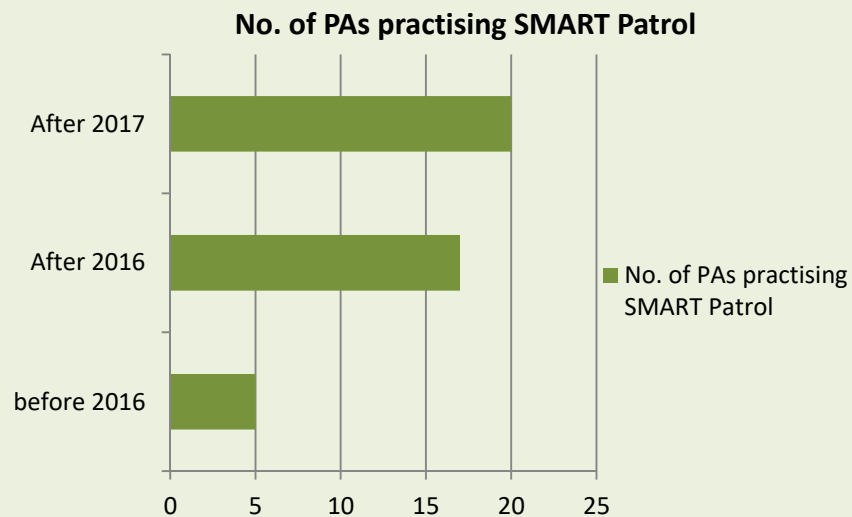


Project's Impact in collaboration with Norwegian Environment Agency, WCS

- Participatory environmental education program are put in place in education program of some PAs.



- As a result of capacity trainings, the number of PAs that use the SMART Tool has been increased. **(Five in 2015 to twenty in 2018)**



Process of PA establishment

Proposal

- By communities, I/NGOs, local government, an area with some significant biodiversity for gazzement as PA



Proposed notification

- Review By Forest Department, and submit to Ministry Office for approval to conduct initial works
- Preliminary Assessment By staff of township FD or PA at the proposed site, and report to FD
- FD submits the report to the Ministry Office with comments (to proceed for proposed notification or to decline the proposal)
- Union Minister, upon FD's recommendation, issues proposed notification



Consultations process

- Land settlement committee is formed (GAD, FD & Agricultural Land Management and Statistics Department, DoF etc.)
- Declare the proposed notification and invite the public to submit complaints on rights and privileges within 90 days.

Process of PA establishment



Consultations process

- Consultations with stakeholders for boundary
- Committee records all the complaints, and review, and submit a settlement report including proposed boundary agreed by the stakeholders, privileges and traditional rights of stakeholders, buffer zones and compensation, to DG of the FD.
- DG provides recommendations regarding the report
- Committee implements actions according to the recommendations of the DG
- Committee submits the final report including final proposed protected area boundary
- DG submits the report and gazettment notification draft to the Union Minister.



Gazettment

- Union Minister, upon the approval of the Government, declares the PA by issuing notification.

Paradigm shift in Management

- Coexistence between PA and Communities is one of the means to address challenges to PA.
- New paradigm in PA management, more space for community, people oriented, benefits beyond the PA boundary.

Myanmar
Wildlife
Protection
Act 1936

- No room for local community

Protection of
Wildlife and
Protected
Areas Law
1994

- Allow community to access biological resources
- Public education
- Buffer zone management

Conservation
of Biodiversity
and Protected
Areas Law
(2018)

- Allow community to access biological resources
- Public education
- Buffer zone management
- Community-based ecotourism
- Co-management

Conclusion

- Myanmar well recognizes the importance of well being for communities in PAs management.
- Need to develop the Park-People co-existing management approach based on the national experiences and international lessons.
- To Learn best practices and knowledge from this APAP TW : MEE and IUCN Green List PAs



Source: Internet

Sharing Information

 tripadvisor



Source: Internet

Thank you for your attention.....