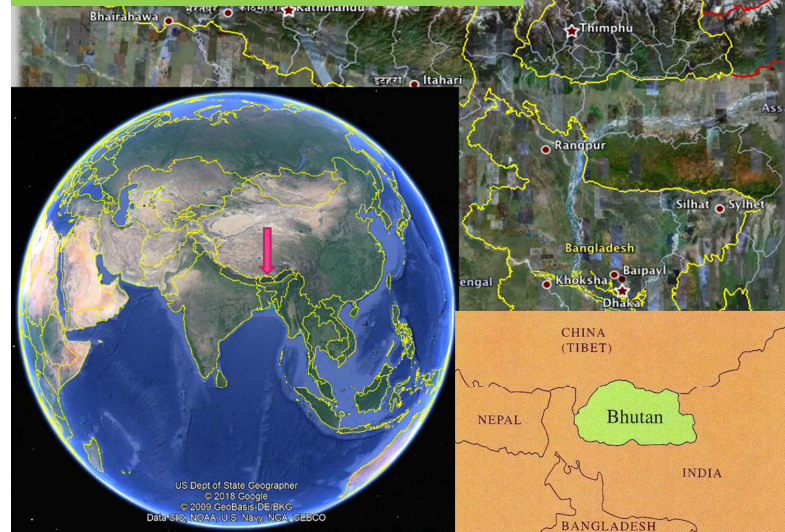




4<sup>th</sup> Asia Protected Areas Partnership Technical Workshop, 19 - 21 June 2018  
Pyeongchang, Republic of Korea  
Thinley Wangdi, Bhutan

Location ..... Where???



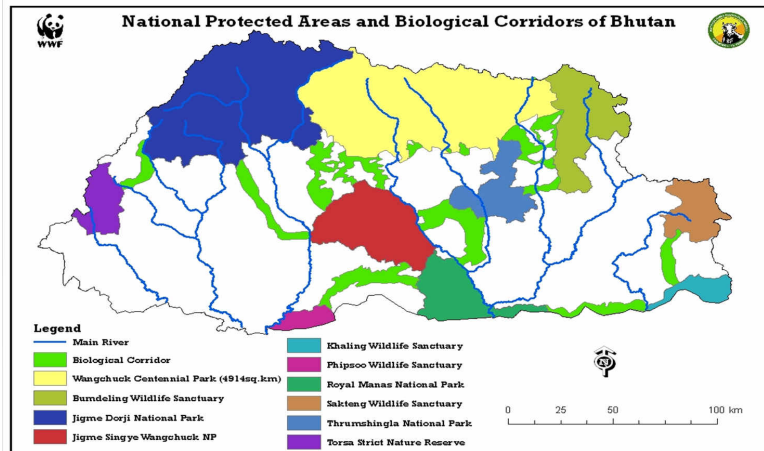
## Content of the presentation

- Part I: Protected Area Management Effectiveness (PAME) methodologies/tools used in Bhutan.
- Part II: Site-Level Case Study of Management Effectiveness Evaluation (MEE) Implementation.
- Part III: Other International Standards used in Bhutan to evaluate PAs.
- Lessons learned from MEE Implementation.
- Future plans for MEE in Bhutan PAs.



Protected Area Management Effectiveness (PAME) Methodologies & Tools

## Introduction to Protected Areas Network of Bhutan



## History of PAME Methodologies/Tools in Bhutan

- Prior to 2001, the success of the PAs in Bhutan monitored through physical & financial progress.
- The WWF Rapid Assessment & Prioritization of Protected Area Management (RAPPAM) by WWF in 4 PAs in Bhutan (JDNP, JSWNP, TNP & BWS) in 2001.
- METT introduced & exercises carried out in RMNP by WWF focusing on enforcement aspects in 2014 (SMART Patrolling).
- Nature Conservation Division under DoFPS initiated and piloted the METT exercises in 4 PAs (RMNP, JSWNP, TNP & WCNP) to assess their management effectiveness.
- METT Plus with modification of METT specific to Bhutan context was applied in all PAs in Bhutan in 2016.

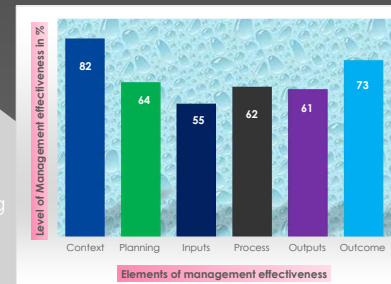
## PAME Implementation Process

- Conducted 2 national level workshop to educate stakeholders on the importance of PAME tools.
- 8 trainings of trainers (ToT) workshops to PA managers and rangers were organized.
- Developed Bhutan specific methodology & guideline and assessment conducted in all 10 PAs & one Botanical Park.
- Self Assessment results were verified through field trips and expert reviewers.



## METT Plus Implementation Results

- Implementation result of METT plus indicates that the PAs in Bhutan are managed fairly well with overall rating of 66% out of 100% scale.
- Low level of effectiveness in some elements are due to:
  - > Lack of financial & technical resources.
  - > Lack of research & monitoring data limiting the understanding of conservation impact.
  - > Some PAs are big in size compared to others coupled with challenging and demanding terrain.



## Benefits of using PAME Methodologies/Tools

- State of Park report for Bhutan.
- Guideline for assessing level of threat in the protected areas specific to Bhutan developed.
- Species level conservation action plan developed for few species (tiger, snow leopard and red panda action plan under drafting process).
- Protected area zonation guidelines reviewed as per current needs and context.
- Guideline for protected area management plan preparation developed.
- Capacity building for staff working in the PAs.

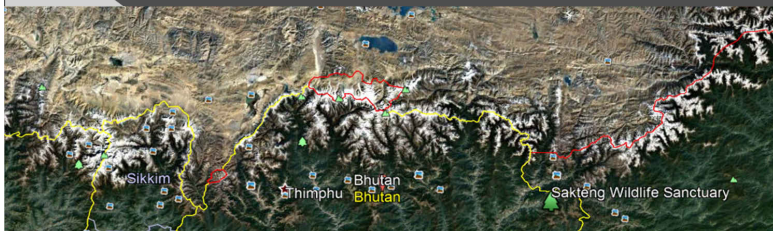


Ministry of Agriculture and Forests  
Royal Government of Bhutan



## Site-Level Case Study of Management Effectiveness Evaluation (MEE) Implementation

## Location of Sakteng Wildlife Sanctuary



### Vision

- Conserve the unique assemblage of biological diversity and cultural heritage.

### Objectives

- Ensure biodiversity conservation, promotion of cultural heritage and sustainable utilization of natural resources.
- Develop the sanctuary as an ecotourism hub in eastern Bhutan.



## Floral Diversity

- 858 plant species including 130 orchids & 41 species of rhododendron (almost 90% of country's rhododendron species)





### Faunal Diversity

- 37 mammal species
- 280 bird species
- 63 species of butterfly

### Demographic & Socio-Economic Information

- Approximately 5000 people in 13 villages with 772 households
- 85% (567 HH) depends on livestock farming
- Only about 8% of the area is agriculture land and most of this is located in the lower valleys



### Brief Report on Self Assessment of SWS Using METT Plus in 2016

#### Background:

- Past assessment and evaluation process were mostly donor driven (was not holistic approach).
- Self assessment of all PAs using METT Plus in Bhutan conducted after successful introduction of METT in 2015 in 4 PAs ( RMNP, JSWNP, PNP & WCNP)
- Self Assessment was done engaging the park staff from 3 ranges and park head office.



### Objective of Self Assessment

- Identification of gaps and threats in effective management of the Sanctuary.
- Capacity building & knowledge transfer through involvement of individual staff in assessing management effectiveness.
- Strengthen SWS management system through regular assessments and monitoring.
- Improving protected area policy and secure fund to further strengthen protected area network of the country through information sharing.



## Main Issues & Actions Identified from the MEE Process

### 1. Grazing & Agriculture

- > Unmanaged grazing leading to habitat degradation and increased human wildlife conflict (HWC).
- > Livestock management including introduction of improved breeds, stall feeding and removal of unproductive cattle are recommended.

### 2. Infrastructure Development

- > Government plan to construct hydropower from Gamri river will lead to fragmentation and degradation of wildlife habitat.
- > Adherence to environmental friendly construction approach, bioengineering work, corridors for animal movement and plantations are recommended.



## Main Issues & Actions Identified from the MEE Process

### 3. Tourism and Income Generation Opportunity

- > Lack of packed tourism products, park information centre, tourism strategy and basic infrastructures contributes to low inflow of visitors.
- > Creation of tourism products unique to the community culture & landscape in close collaboration with TCB and tour agents are recommended.

### 4. Sustainability of Non-Wood Forest Products

- > Illegal collection of some medicinal plants (eg. *Paris polyphylla*, *Gensing*, etc).
- > Formation of NWFP user groups, preparation of collection guidelines and exploration of domestic cultivation are recommended.



## Main Issues & Actions Identified from the MEE Process

### 5. Culture and Traditions of the community

- > Brokpa traditional dress & culture unique from rest of Bhutan is facing rapid degeneration.
- > Increased supply of sheep for wool production, documentation of traditional knowledge and historical sites & establishment of cultural museum are recommended.



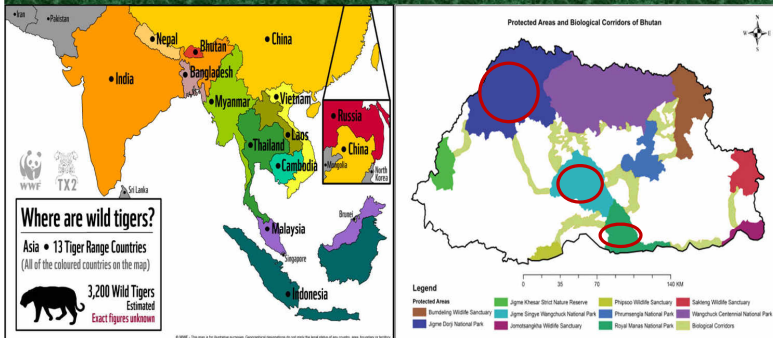
## Main Issues & Actions Identified from the MEE Process

### 6. Other Issues highlighted in the assessment

- > Lack of trans-boundary cooperation despite sharing border with Indian State of western Arunachal Pradesh.
- > Lack of preparedness to climate change adaptations due to poor understanding of climate science.
- > Increasing issues of solid waste & lack of management.
- > Increasing pressure on timber and fuel wood.



## CA|TS (Conservation Assured Tiger Standards)



- Bhutan is one of the 13 tiger range countries.
- Current CA|TS Council Secretariat in Bhutan chaired by Director, DoFPS.
- There are 3 CA|TS registered sites (RMNP, JDNP & JSWNP) which was done in 2016.

## CA|TS (Conservation Assured Tiger Standards)

- National Committee for CA|TS instituted with the member from WWF Bhutan, DoFPS-NCD, RSPN, UNDP, UWICER).
- Independent Reviewer identified (Bhutan Ecological Society) – to review the standards of highest tiger conservation standards based on Cats manual
- Approval from International Cats Executive Council under and waiting for the approval.
- Self Assessment in 3 CA|TS registered sites conducted in early 2018 based on Cats manual.
- Implementation of CA|TS standards supported by WWF Bhutan.

### Important Lessons from MEE Implementation

- It provides opportunity to identify gaps for resource mobilization and better management of the PAs.
- It provides platform to build and strengthen coordination among PA staff and community for enhanced conservation support.

## Future plans for MEE in Bhutan PAs

- Conduct comparative analysis of effectiveness of different MEE tools implemented.
- Build on the existing MEE tools and adopt the best suitable tools that provide holistic and comprehensive information on the management effectiveness of PAs.
- Roll out the best MEE tools in all 10 PAs of Bhutan.

